



SPECIFICATIONS

CONTACT RATING: 5A/15VDC.

INITIAL CONTACT RESISTANCE: 20mΩ (initial value)

INSULATION RESISTANCE: 1000MΩ

(500VDC between open contact).

DIELECTRIC STRENGTH: 1500V RMS@sea level. (initial value)

ELECTRICAL LIFE: 6000 cycles min.

OPERATION FORCE FOR THE ROCKER: 4~9N.

MATERIALS

HOUSING: Nylon6/6 UL94V0 black.

ROCKER: Nylon6/6 UL94V2 black.

PIN: Brass, Nickel plated.

PIN TERMINAL: Brass, Coin silver, Silver plated.

BREAK TERMINAL: Brass, Silver plated.

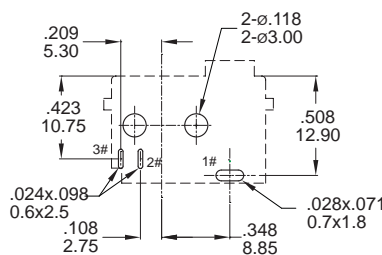
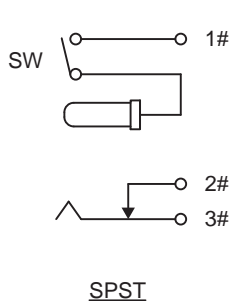
TIP TERMINAL: Stainless steel, Silver plated.

CONTACT: Brass, Coin silver, Silver plated.

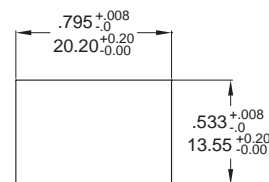
SIDE: Brass, Nickel plated.

SPRING: Spring steel.

▼ SCHEMATIC & PCB LAYOUT



PCB LAYOUT
BOTTOM VIEW



PANEL CUT-OUT

▼ DIMENSION

Units: mm

Dimensions	PIN ϕ A
MODEL	
LRJ-001	ϕ 2.50
LRJ-002	ϕ 2.00
LRJ-003	ϕ 2.10

